

Entering GPS locations into your GPS is pretty slow and it's easy to make a mistake. Here's a better way.

These are the steps I followed to get the Targa Wrest Point reconnaissance data onto my Garmin Nuvi 760 GPS. Different models will need different steps but it should be similar:

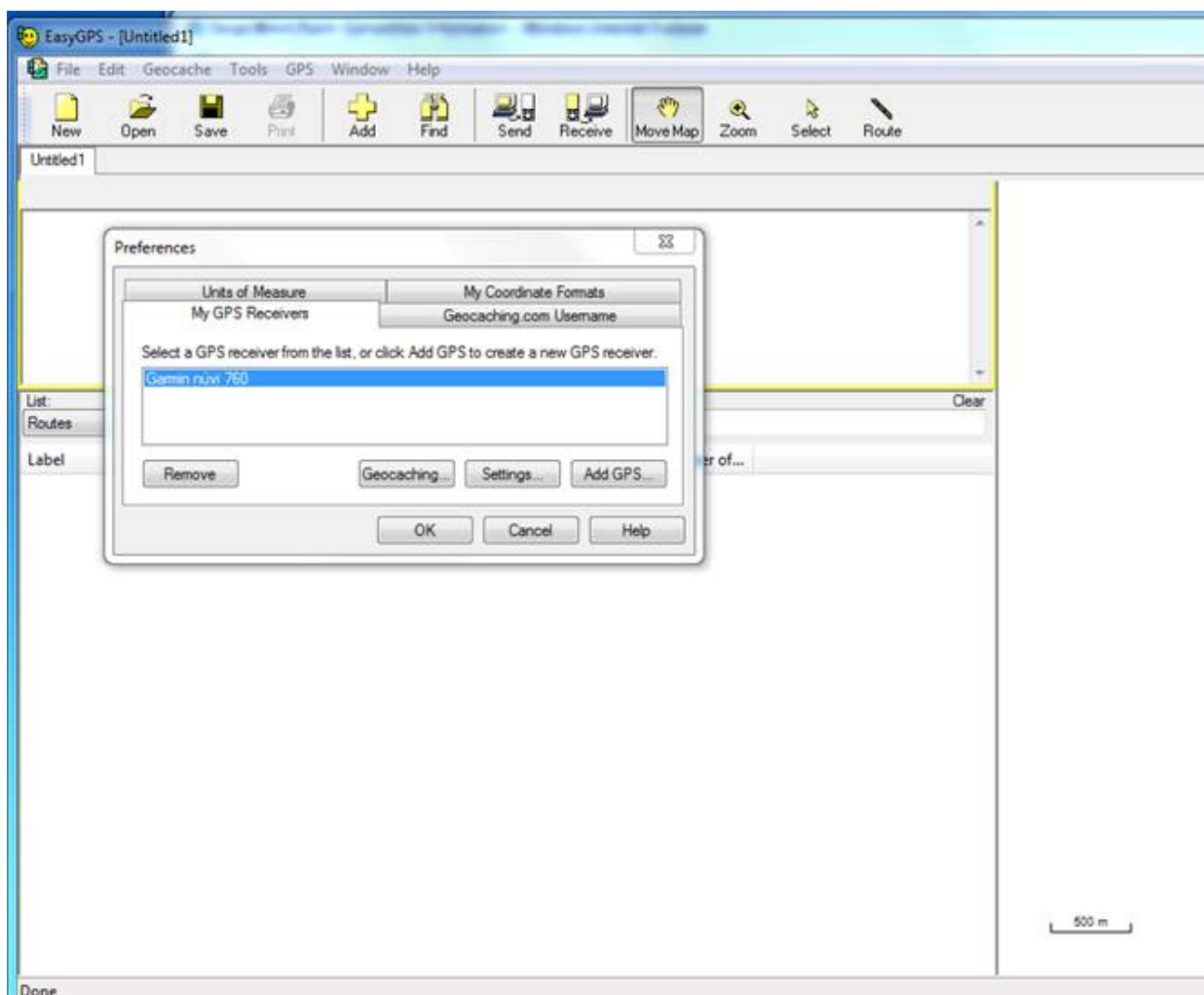
- Download and install free EasyGPS software from: <http://www.easygps.com/download.asp>
- Download and save the zipped Targa Wrest Point .gpx reconnaissance file from the Targa Wrest Point web site : <http://www.targawrestpoint.com.au/Competitors.html>



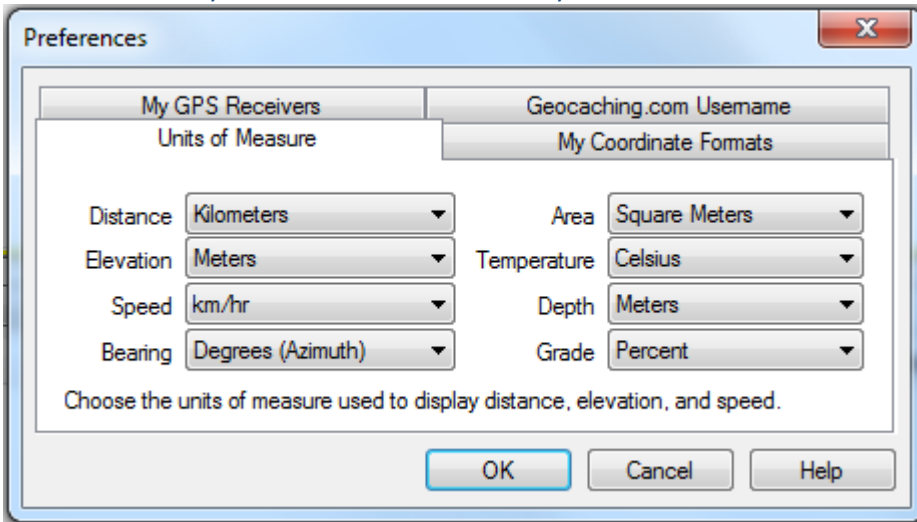
COMPETITOR INFORMATION

ENTRY FORMS	BOOKING FORMS	ESSENTIAL INFORMATION
Application Form - PDF	Spirit of Tasmania Booking Request Form	Reconnaissance Notes
Application Form - Word	Wrest Point Accommodation Booking Request Form	Reconnaissance GPS Waypoints GPX File

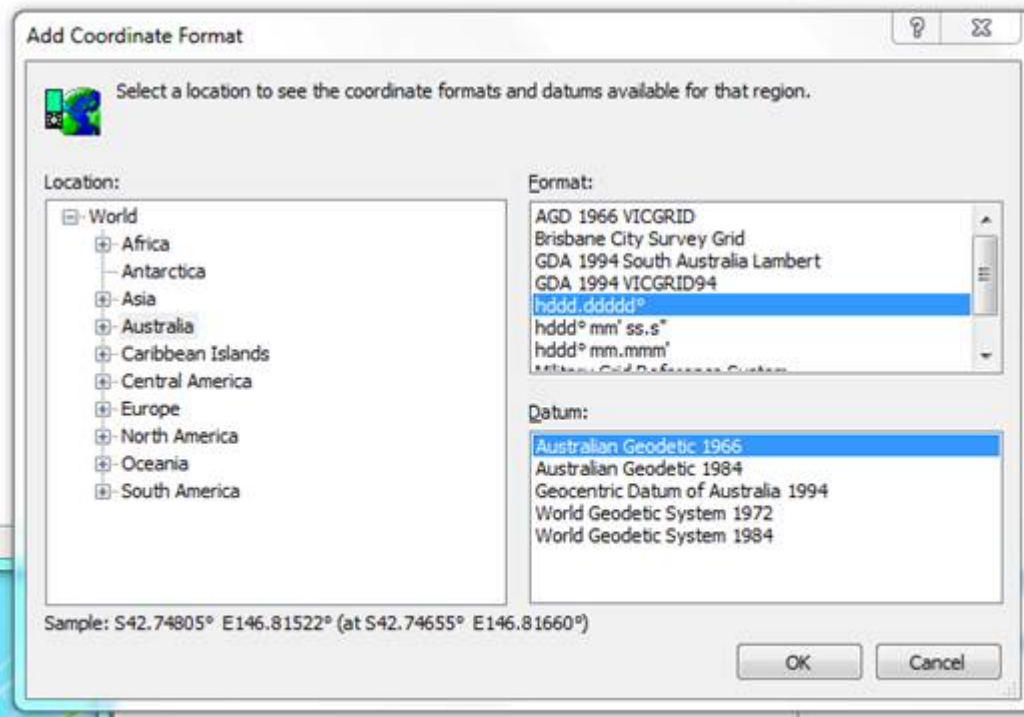
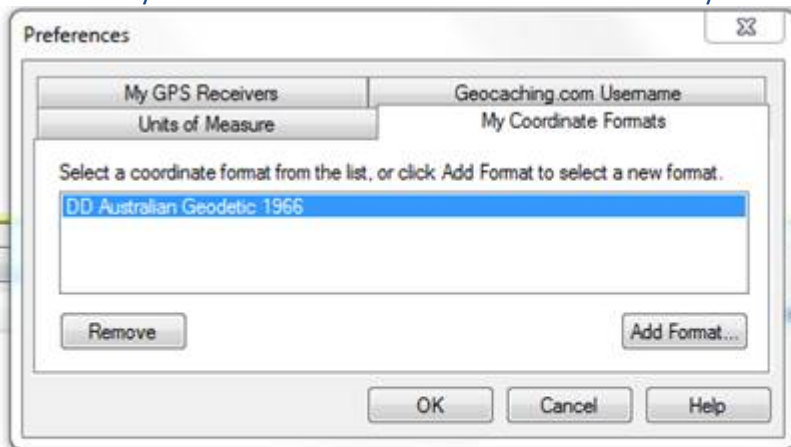
- Extract the .zip file and save the .gpx file to a known location (like your desktop)
- Connect your GPS to your PC using it's USB cable. Turn the GPS on.
- When the GPS is ready, run EasyGPS and select your model GPS from the list it offers. If you miss this step, you can launch it by clicking on Edit/Preferences like this:



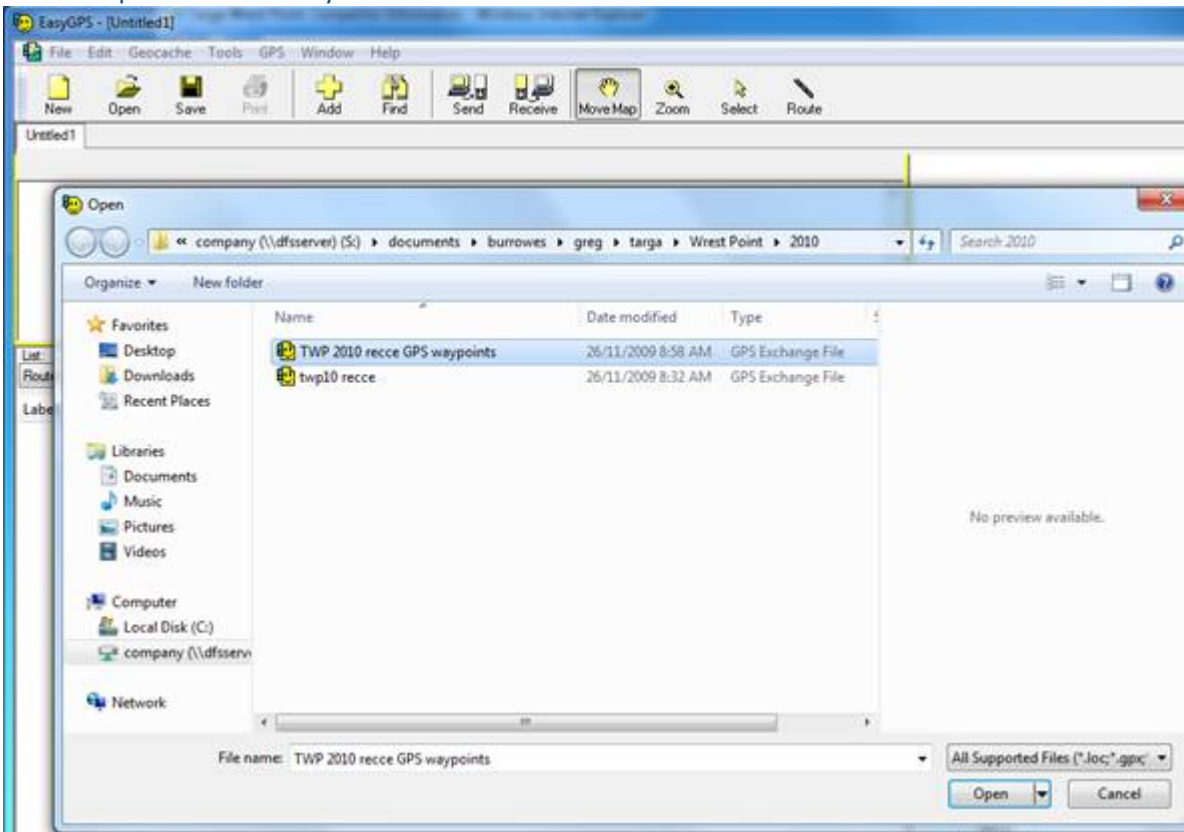
- Then set your Units of Measure so they look like this:



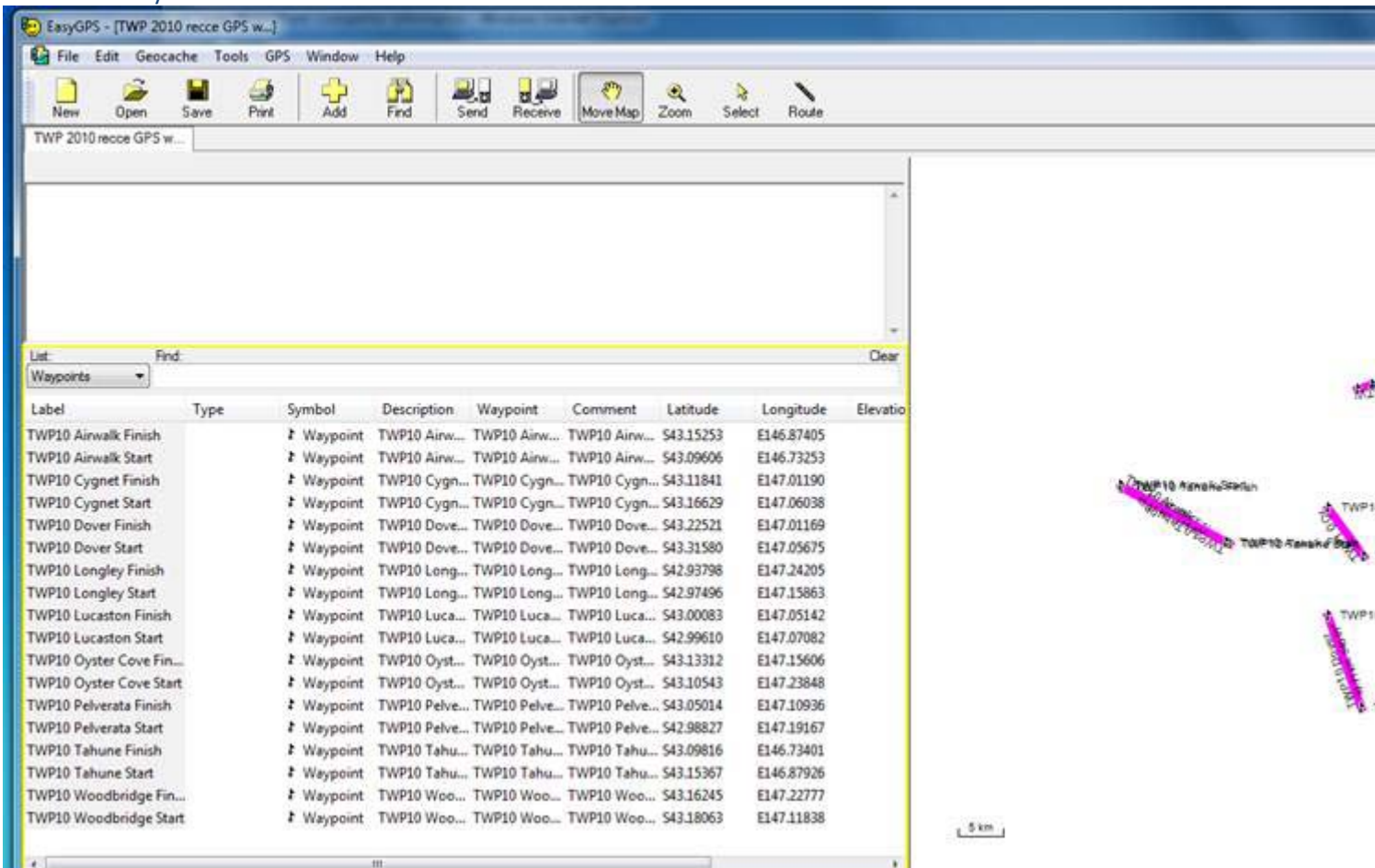
- Set your Coordinate Formats to hddd.ddddd so they look like this:



- Open the .GPX file you saved:



- Then you should see:



- You are now ready to send the data to your GPS. From the GPS menu at the top of the screen, choose Send to GPS. This only takes less than 30 seconds.
- Then exit EasyGPS, disconnect your GPS from the PC, allow the GPS to start up normally. If it doesn't, switch it off and back on again.

The data will now be in the GPS but depending on your model you may need to follow some steps to access it. The data contains Waypoints for the start and finish of each stage and Routes that run from each stage start to its finish (but not necessarily on the same roads. The intention is to help you find the correct start point and identify the finish point. Go to a start, find the actual start point in yellow paint on the road, drive at low speed and check your notes against the road, arrive at the finish then choose the next stage to check. You can choose what order to do the reconnaissance in. Choose your next route depending on your preferences.

On my Garmin:

1. Choose Tools, My Data and I see new routes for each stage. Select all of the TWP stages and Import them. The Waypoints will be imported into your Favourites and the Routes will be imported into your Routes
2. Go back to the front menu screen.
3. Choose Where to.
4. Select Routes.
5. Choose the stage you want to check eg: TWP10 Lucaston and select Go. Your GPS should direct you to the start point of the Lucaston stage.

Alternately you can:

4. Select Favourites.
5. Select TWP10 Lucaston Start and select Go. Your GPS should direct you to the start point of the Lucaston stage.